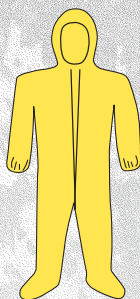


3678B

M-5XL

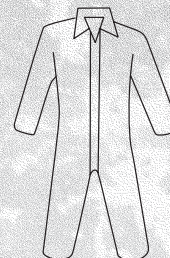
- Yellow coverall, storm flap over zipper front with elastic wrist/ankle and attached hood
- Bound seams
- 25 per case



3679B

M-5XL

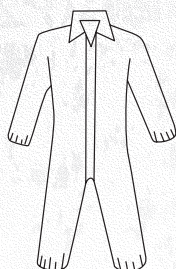
- Yellow coverall, storm flap over zipper front with elastic wrist/ankle and attached hood
- Bound seams
- 25 per case



3700

M-5XL

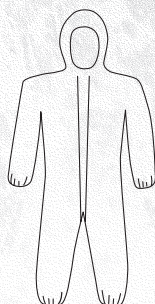
- White coverall, zipper front and collar
- 25 per case



3702

M-5XL

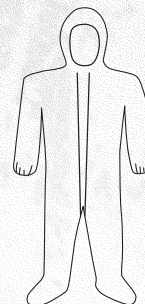
- White coverall, zipper front with elastic wrist and ankle
- 25 per case



3706

M-5XL

- White coverall, zipper front with elastic wrist/ankle and attached hood
- 25 per case



3709

M-5XL

- White coverall, zipper front with elastic wrist/ankle and attached hood/boot
- 25 per case



3712

One Size

- White 18" sleeve
- 200 per case



3713

One Size

- Shoe cover
- 200 per case



3714

One Size

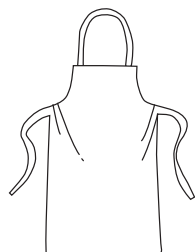
- White boot cover
- 200 per case



3718

M-4XL

- White lab coat, snap front closure, no pocket
- 30 per case



3722

One Size

- White apron, 28" x 36"
- 100 per case



POSIWEAR® BA TYPICAL PROPERTIES

Physical Properties	Test Methods	Units	POSIWEAR® BA Results
Strength			
Weight	IST 130.1	gsm	57.63/1.7oz/yd ²
MD Tensile (Grab)	IST 110.1	lb/in	27.5
CD Tensile (Grab)	IST 110.1	lb/in	18.3
MD Elongation	IST 110.1	%	71.7
CD Elongation	IST 110.1	%	79.2
MD Tear Strength (Trapezoid)	IST 100.2	lb/in	7.3
CD Tear Strength (Trapezoid)	IST 100.2	lb/in	11.1
MD Tear Strength (Elmendorf)	IST 100.1	gms	531.3
CD Tear Strength (Elmendorf)	IST 100.1	gms	NA
MD Peel	AATCC 136	lb/in	0.76
CD Peel	AATCC 136	lb/in	NA
Bursting Strength (Mullen Burst)	IST 30.1	psi	32.9
Barrier			
Hydrostatic Head	IST 80.6-01 (Testex)	cm	191.3
Static Decay (MD) (50% RH) NFPA 99	IST 40.2	sec	nc
Resistance to Blood Penetration	ASTM 1670	n/a	Pass
Comfort			
M.V.T.R.	IST 70.2	g/m ² /day	3380

***These physical properties represent typical values of the nonwoven fabric. These values should not be considered as a specification or certificate of material and or specification value.**

TARGET USES

- DRY PARTICULATE
- LIQUID SPLASH

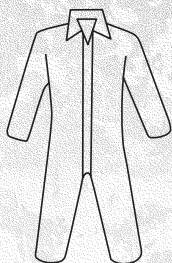
TARGET INDUSTRIES

- INDUSTRIAL MANUFACTURING
- ENVIRONMENTAL REMEDIATION
- MAINTENANCE AND CLEANUP
- AUTOMOTIVE

FEATURES AND BENEFITS

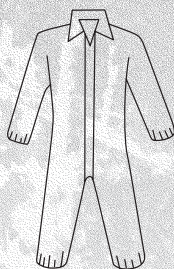
- ASTM 1670 BLOODBORNE PATHOGENS
- PATENTED MICROPOROUS MATERIAL
- NFPA 99 ANTISTATIC
- LOW LINT





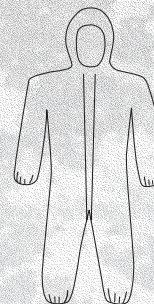
3600 **M-5XL**

- White microporous coverall, zipper front and collar
- 25 per case



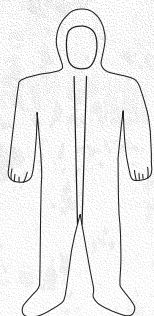
3602 **M-5XL**

- White microporous coverall, zipper front with elastic wrist and ankle
- 25 per case



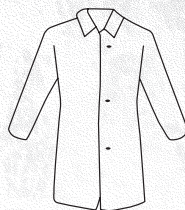
3606 **M-5XL**

- White microporous coverall, zipper front with elastic wrist/ankle and attached hood
- 25 per case



3609 **M-5XL**

- White microporous coverall, zipper front with elastic wrist/ankle and attached hood/boot
- 25 per case



3611 **M-4XL**

- White microporous lab coat, snap front closure, no pocket
- 30 per case



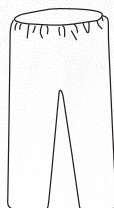
3620 **M-4XL**

- White microporous lab coat, snap front closure with chest and hip pocket
- 30 per case



3617 **M-4XL**

- White microporous shirt with snap front closure
- 50 per case



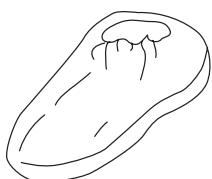
3616 **M-4XL**

- White microporous pants with elastic waist
- 50 per case



3612 **One Size**

- White microporous 18" sleeve
- 200 per case



3613 **One Size**

- White microporous shoe cover
- 200 per case



3614 **One Size**

- White microporous boot cover
- 200 per case

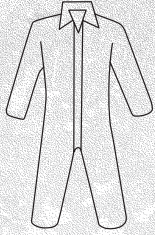


3622 **One Size**

- White microporous apron, 28" x 36"
- 100 per case

DISPOSABLE CLOTHING

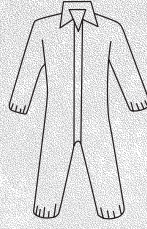




C3800

M-5XL

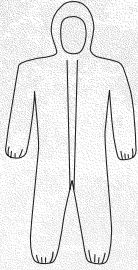
- White SMMMS coverall, zipper front and collar
- 25 per case



C3802

M-5XL

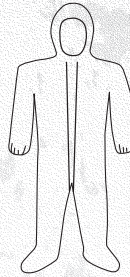
- White SMMMS coverall, zipper front with elastic wrist and ankle
- 25 per case



C3806

M-5XL

- White SMMMS coverall, zipper front with elastic wrist/ankle and attached hood
- 25 per case



C3809

M-5XL

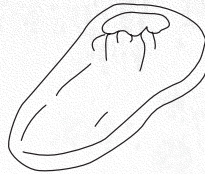
- White SMMMS coverall, zipper front with elastic wrist/ankle and attached hood/boot
- 25 per case



C3812

One Size

- White SMMMS 18" sleeve
- 200 per case



C3813

One Size

- White SMMMS shoe cover
- 200 per case

POSIWEAR® M3 TYPICAL PROPERTIES

Description	Test Methods	Units	POSIWEAR® M3
Strength			
Basis Weight	IST 130.1	gsm	55/1.6oz/yd ²
Grab Tensile	ASTM D5034	lb.	36.7
Trap Tear	ASTM D5733	lb.	6.5
Surface Resistance	IST 80.6	N	0.99
Impact Penetration	AATCC 42	gsm	0.05
Barrier			
Hydrostatic Pressure	AATCC 127	cm	85
Comfort			
Air Permeability	IST 70.1	cfm	38

*These physical properties represent typical values of the nonwoven fabric. These values should not be considered as a specification or certificate of material and or specification value.

TARGET USES

- DRY PARTICULATE
- LIGHT LIQUID SPRAY

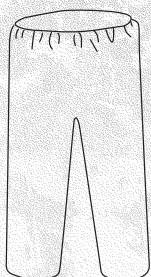
TARGET INDUSTRIES

- INDUSTRIAL MANUFACTURING
- FOOD PROCESSING
- GENERAL MAINTENANCE
- HEAVY DUST ENVIRONMENTS

FEATURES AND BENEFITS

- FIVE LAYERS OF PROTECTION
- HIGH LEVEL OF BREATHABILITY
- SERGED SEAMS

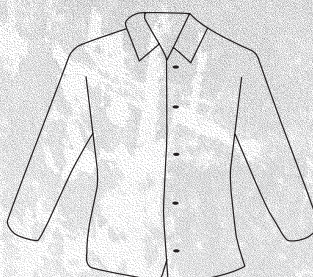




C3816

M-4XL

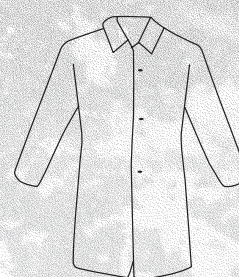
- White SMMMS pants with elastic waist
- 50 per case



C3817

M-4XL

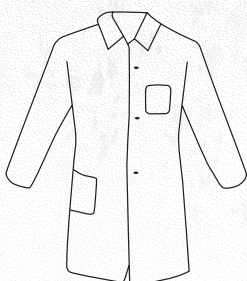
- White SMMMS shirt with snap front closure
- 50 per case



C3818

M-4XL

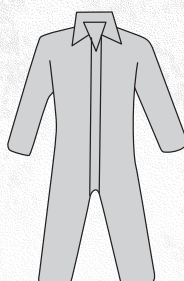
- White SMMMS lab coat, snap front closure, no pocket
- 30 per case



C3820

M-4XL

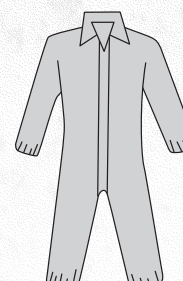
- White SMMMS lab coat, snap front closure with chest and hip pocket
- 30 per case



C3900

M-5XL

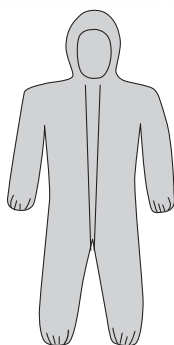
- Gray SMMMS coverall, zipper front and collar
- 25 per case



C3902

M-5XL

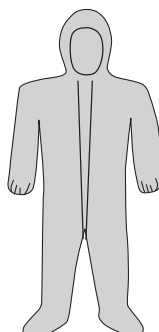
- Gray SMMMS coverall, zipper front with elastic wrist and ankle
- 25 per case



C3906

M-5XL

- Gray SMMMS coverall, zipper front with elastic wrist/ankle and attached hood
- 25 per case



C3909

M-5XL

- Gray SMMMS coverall, zipper front with elastic wrist/ankle and attached hood/boot
- 25 per case



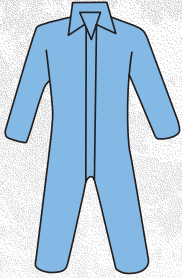
C3913

One Size

- Gray SMMMS shoe cover
- 200 per case

DISPOSABLE CLOTHING

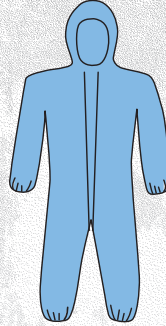




3100

M-4XL

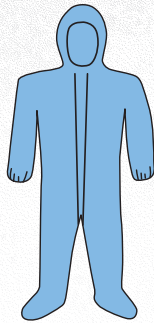
- Blue flame-resistant coverall, zipper front and collar
- 25 per case



3106

M-5XL

- Blue flame resistant coverall, zipper front with elastic wrist/ankle and attached hood
- 25 per case



3109

M-5XL

- Blue flame resistant coverall, zipper front with elastic wrist/ankle and attached hood/boot
- 25 per case

TARGET USES

- DRY PARTICULATE
- FLAME RETARDANT

TARGET INDUSTRIES

- UTILITIES
- REFINERIES
- WELDING
- CONSTRUCTION

FEATURES AND BENEFITS

- PASSES TEST NFPA 701
- ZIPPER PASSES FLAME TEST TO MEET CFR 1610
- DESIGNED FOR USE OVER PROTECTIVE GEAR
- SELF-EXTINGUISHABLE
- SERGED SEAMS



Posiwear® FR Typical Properties

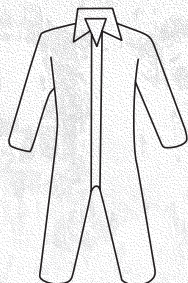
Physical Property	Test Methods	Units	Posiwear® FR
Weight	ASTM D3776	gsm	81/2.39oz/yd ²
MD Tensile (Grab)	ASTM D5034	lb/in	27.1
CD Tensile (Grab)	ASTMD5034	lb/in	16.1
MD Tear Strength (Trapezoid)	ASTM D5733	lb/in	7.3
CD Tear Strength (Trapezoid)	ASTM D5733	lb/in	12

TARGET USES

- DRY PARTICULATE
- LIGHT LIQUID SPRAY

TARGET INDUSTRIES

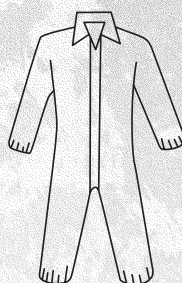
- ASBESTOS ABATEMENT
- REMEDIATION
- FOOD PROCESSING
- CLEANING



3400

M-5XL

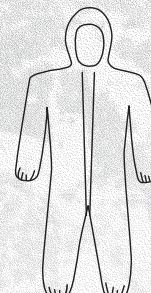
- White PE laminated coverall, zipper front and collar
- 25 per case



3402

M-4XL

- White PE laminated coverall, zipper front with elastic wrist and ankle
- 25 per case



3406

M-5XL

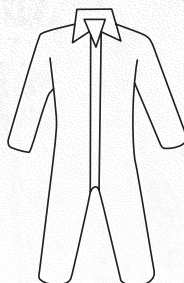
- White PE laminated coverall, zipper front with elastic wrist/ankle and attached hood
- 25 per case



3409

M-5XL

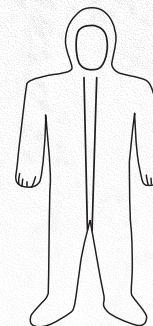
- White PE laminated coverall, zipper front with elastic wrist/ankle and attached hood/boot
- 25 per case



U1130

M-5XL

- White PE coated coverall, zipper front and collar
- 25 per case



U1630

M-5XL

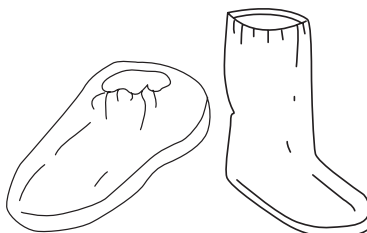
- White PE coated coverall, zipper front with elastic wrist/ankle and attached hood/boot
- 25 per case



C3712

One Size

- White PE coated 18" sleeve
- 200 per case



3763

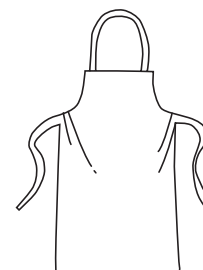
One Size

- White PE coated shoe cover
- 200 per case

3764

One Size

- White PE boot cover



U2510

One Size

- White PE coated apron, 28" x 36"
- 100 per case



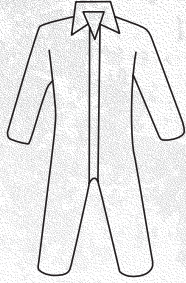
MICROPOROUS

TARGET USES

- DRY PARTICULATE
- LIGHT LIQUID SPRAY

TARGET INDUSTRIES

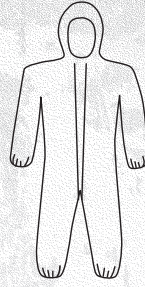
- ASBESTOS ABATEMENT
- REMEDIATION
- FOOD PROCESSING
- CLEANING



3650

L-5XL

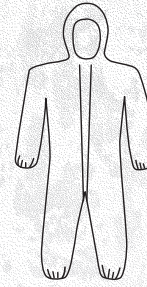
- White microporous coverall, zipper front and collar
- 25 per case



3652

L-5XL

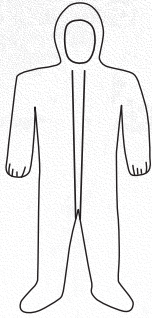
- White microporous coverall, zipper front with elastic wrist and ankle
- 25 per case



3656

L-5XL

- White microporous coverall, zipper front with elastic wrist/ankle and attached hood
- 25 per case



3659

L-5XL

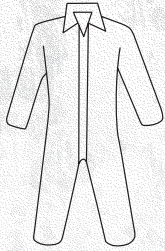
- White microporous coverall, zipper front with elastic wrist/ankle and attached hood/boot
- 25 per case

TARGET USES

- DRY PARTICULATES

TARGET INDUSTRIES

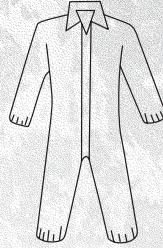
- GENERAL LABOR
- PHARMACEUTICALS
- CLEANING
- LABORATORY



U1100

M-5XL

- White coverall, zipper front and collar
- 25 per case



U1200

M-5XL

- White coverall, zipper front with elastic wrist and ankle
- 25 per case



U1600

L-5XL

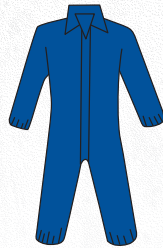
- White coverall, zipper front with elastic wrist/ankle and attached hood/boot
- 25 per case



U1100B

M-5XL

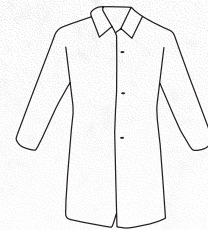
- Navy coverall, zipper front and collar
- 25 per case



U1200B

M-4XL

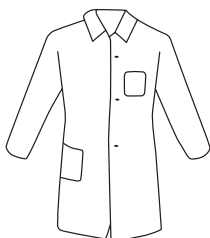
- Navy coverall, zipper front with elastic wrist and ankle
- 25 per case



U1710

M-5XL

- White lab coat, snap front closure, no pocket
- 30 per case



U1730

M-5XL

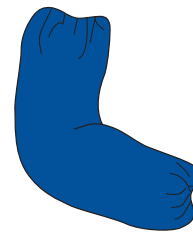
- White lab coat, snap front closure with chest and hip pocket
- 30 per case



U1710B

M-4XL

- Navy lab coat, snap front closure, no pocket
- 30 per case

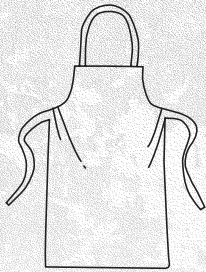


U2400B

One Size

- Navy 18" sleeve
- 200 per case





U2500

One Size

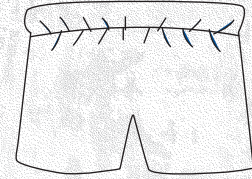
- Heavyweight white apron, 28" x 36"
- 100 per case



U2400

One Size

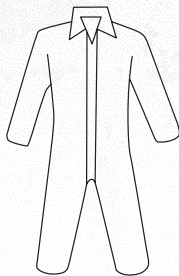
- Heavyweight white 18" sleeve
- 200 per case



U2010

One Size

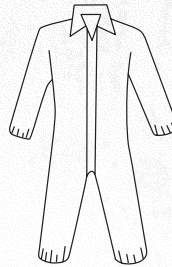
- Heavyweight white boxer shorts
- 100 per case



3500

M-5XL

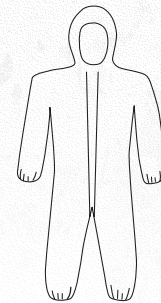
- White coverall, zipper front and collar
- 25 per case



3502

M-5XL

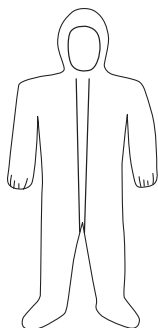
- White coverall, zipper front with elastic wrist and ankle
- 25 per case



3506

M-5XL

- White coverall, zipper front with elastic wrist/ankle and attached hood
- 25 per case



3509

M-5XL

- White coverall, zipper front with elastic wrist/ankle and attached hood/boot
- 25 per case



3575

M-5XL

- Navy coverall, zipper front and collar
- 25 per case



3584

XL-5XL

- Navy coverall, zipper front with elastic wrist/ankle and attached hood/boot
- 25 per case