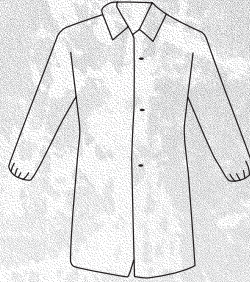


3511

M-5XL

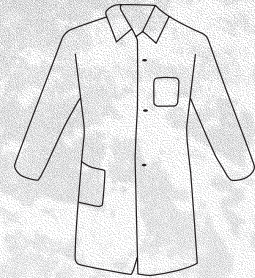
- White lab coat, snap front closure, no pocket
- 30 per case



3512

M-5XL

- White lab coat, snap front closure, no pocket with elastic wrist
- 30 per case



3514

M-5XL

- White lab coat, snap front closure with chest and hip pocket
- 30 per case



3511B

L-4XL

- Navy lab coat, snap front closure, no pocket
- 30 per case



3515

M-4XL

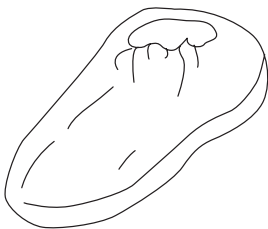
- White shirt with snap front closure
- 50 per case



3516

M-5XL

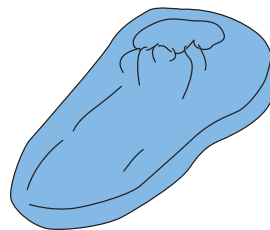
- White pants with elastic waist
- 50 per case



3518

One Size

- White shoe cover
- 200 per case



3518BNS

One Size

- Light blue shoe cover with non skid tread
- 200 per case



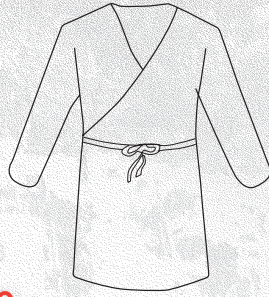
STANDARD WEIGHT POLYPROPYLENE



3519

One Size

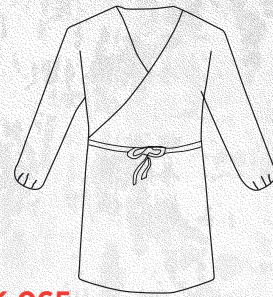
- White boot cover
- 200 per case



3520

XL

- White smock
- 50 per case



USK-065

One Size

- White pullover poultry smock with elastic wrist
- 50 per case

BOUFFANTS	ITEM DESCRIPTION	SIZES AVAILABLE	QUANTITY
UC-1000	White nylon bouffant	18", 21", 24", 28"	1000 per case
UB-1000	White polypropylene bouffant	18", 21", 24", 28"	1000 per case
UB-500	White polypropylene bouffant	21", 24", 28"	500 per case
UB-1000B	Blue polypropylene bouffant	21", 24"	1000 per case
UB-500B	Blue polypropylene bouffant	21", 24"	500 per case
BEARD COVERS	ITEM DESCRIPTION	SIZES AVAILABLE	QUANTITY
UCBC-1000	White nylon beard cover	19"	1000 per case
UBC-1000B	Blue polypropylene beard cover	18"	1000 per case
UBC-500	White polypropylene beard cover	18"	500 per case
UBC-1000	White polypropylene beard cover	18"	1000 per case

RAINWEAR



cleaning
janitorial
construction
food processing
food services
hazmat
abatement
oil/gas



4045 **M-4XL**

- Jacket: 4-snap front closure, flap pockets, attached drawstring hood, vented cape back and underarm vents and open wrist with adjustable snap closures
- Overalls: open ankles with adjustable snap closures, adjustable suspenders, D-ring buckles and side snaps for sizing
- ASTM D 6413



4033 **S-6XL**

- Jacket: 3M™ Scotchlite™ reflective tape, 5-snap closure, flap pockets with snap closure, corduroy collar and detachable hood
- Overalls: 3M™ Scotchlite™ reflective tape, adjustable suspenders, quick release buckles and snap fly
- ANSI Class 3; ISEA 107-2004



4031 **S-5XL**

- Jacket: reflective tape on arms and torso, 5-snap closure, flap pockets with snap closure, detachable hood and vented back
- Overalls: reflective tape on pant leg, adjustable suspenders, quick release buckles and snap fly



4035 **S-7XL**

- Jacket: 5-snap closure with storm flap, flap pockets with snap closure, detachable hood, corduroy collar and vented cape back
- Overalls: adjustable suspenders, quick release buckles, and snap fly
- ASTM D 6413



4035FR **M-8XL**

- Jacket: 5-snap closure with storm flap, flap pockets with snap closure, detachable hood, corduroy collar and vented cape back
- Overalls: adjustable suspenders, quick release buckles and snap fly
- ASTM D 6413



4040 **M-5XL**

- Jacket: 4-snap closure with hook and loop storm flap, heat welded seams, snap-on splash guard, adjustable hook and loop wrist and hood closures and drawstring waist
- Overalls: adjustable hook and loop ankle closures, adjustable suspenders, quick release buckles and side snaps for sizing

4036 **M-4XL**

- Jacket only

4037 **M-4XL**

- Overall only



4025E **M-5XL**

- Jacket: 4-snap closure with interior storm flap, detachable hood, vented cape back, corduroy collar and flap pockets
- Overalls: adjustable suspenders and snap fly



49102 **ONE SIZE**

- Attached hood
- 52" x 80" size can accommodate most body types
- Assorted colors



4148

S-5XL

- Snap front closures with storm flap
- Detachable hood and corduroy collar
- Vented cape back



4160

M-3XL

- Snap front closure with storm flap
- Detachable hood and corduroy collar
- Inner leg snaps form chaps
- Vented cape back
- Badge holder



4160BFR

M-4XL

- Snap front closure
- Detachable hood and corduroy collar
- Inner leg snaps form chaps
- Vented cape back with storm flap
- Badge holder
- ASTM D 6413



8200

9-18

- Latex
- 17" overshoe
- Netted lining and cross rib outer sole
- Adjustable side strap



8400

M-2XL

- 100% Latex
- Waterproof overshoe
- Textured sole



8300

8-15

- 100% PVC
- Reinforced toe and heel
- Removable insole. Unlined with storage bag
- Textured sole
- PVC can be cut to length



8350

8-15

- 100% PVC
- Steel toe and shank
- Removable insole. Unlined with storage bag
- Textured sole
- Passes ASTM F 2412-05 & ASTM F 2413-05 for Impact Resistance and Compression Resistance



8250

8-16

- 100% Latex
- Waterproof overshoe
- Ribbed sole
- 5 adjustable rust resistant buckles
- PVC can be cut to length



8325

8-13

- 100% PVC
- Worn over sock
- Reinforced toe and heel
- Lug sole



HEAT RESISTANT



CHEMICAL RESISTANT



CUT RESISTANT



IMPACT RESISTANT



FLAME RESISTANT



WATER RESISTANT

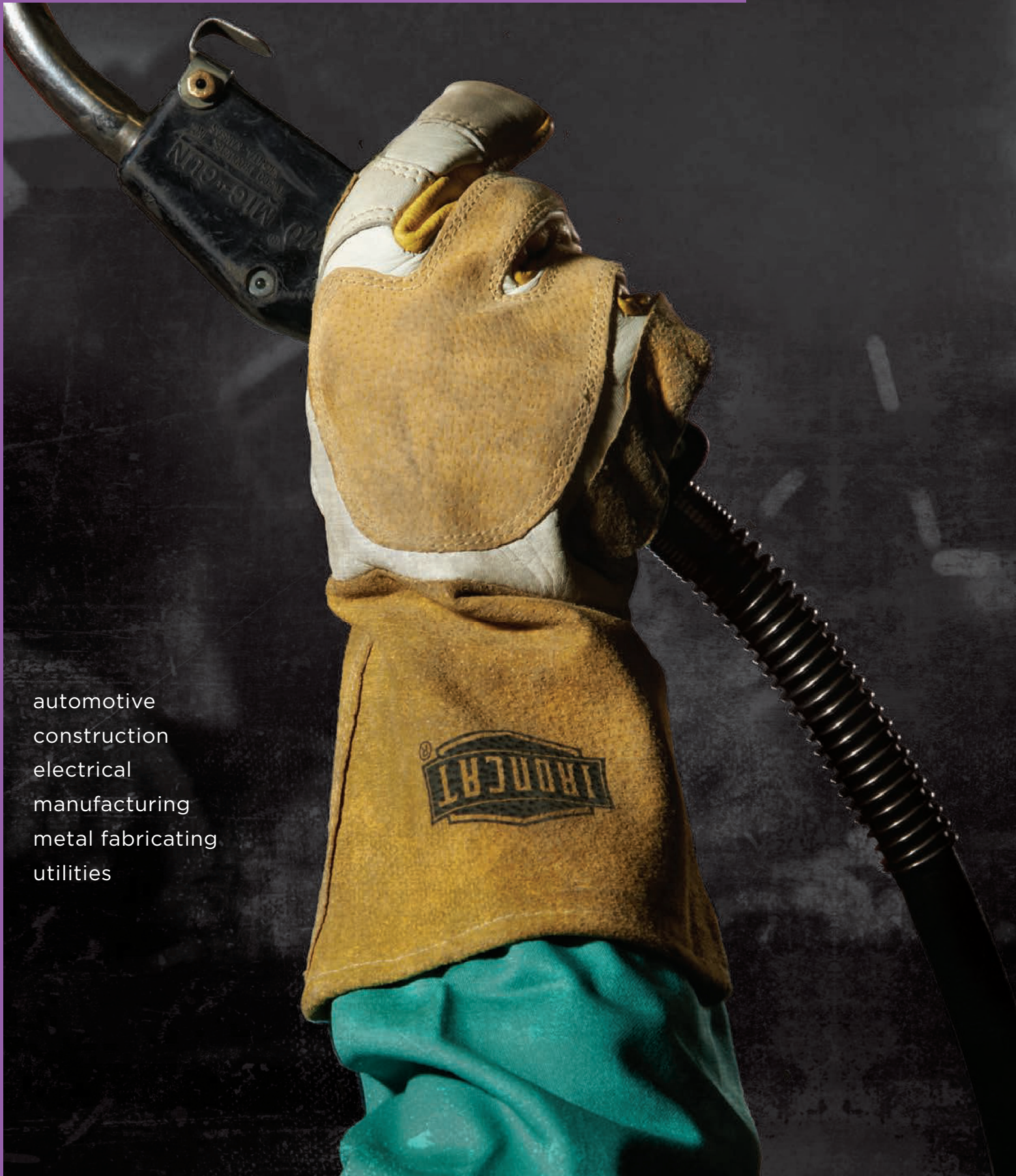


INSULATED



KEVLAR®

WELDING APPAREL



automotive
construction
electrical
manufacturing
metal fabricating
utilities

IRONCAT® is a new high end welding product line from West Chester Protective Gear. This line was developed with a knowledgeable and experienced team of welding professionals. Our main goal is to make sure users are protected while keeping economy in mind.



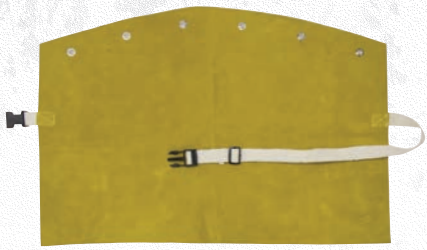
7005 **M-3XL**

- Leather jacket
- Kevlar® thread
- Soapstone pocket on each sleeve
- Anodized and leather reinforced snaps
- Underarm gusset
- Wrist snap



7000 **M-5XL**

- Cape Sleeve
- Kevlar® thread
- Soapstone pocket on each sleeve
- Anodized and leather reinforced snaps
- Wrist snap



7001 **14", 20"**

- Leather bib
- Kevlar® thread
- Adjustable cotton strap
- Coordinates with M-XL cape sleeves



7010 **36", 42"**

- Bib apron
- Kevlar® thread
- Two chest pockets
- Adjustable cotton straps
- Side release buckle



7011 **36", 42", 48"**

- Split bib apron
- Kevlar® thread
- Two chest pockets
- Adjustable cotton straps
- Side release buckle



7002 **20"**

- Coordinates with 2XL-3XL cape sleeves



7012 **18", 24"**

- Waist apron
- Kevlar® thread
- Adjustable cotton strap
- Side release buckle



7030

- Leather shoe protectors
- Kevlar® thread
- Adjustable buckles and snaps
- Double layer leather rivets at toe and ankle high



7020 **18"**

- Leather sleeves
- Kevlar® thread
- Adjustable buckles and snaps
- Anodized and leather reinforced snaps
- Snap at wrist



IRONTEX™ fabric is specially treated flame resistant cotton designed for lightweight and comfortable protection. The fabric will self-extinguish when exposed to flame and will not melt, shrink, or drip. IRONTEX™ conforms to ASTM D6413 flame retardant and washable test methods. Flame resistance lasts up to 100 home washings, and 50 commercial washings. 9 oz flame retardant cotton sateen that provides economical protection against light spark and spatter. Various styles available for level of protection and comfort.



7050

M-3XL

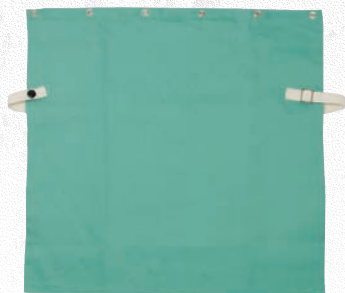
- Jacket
- Anodized snaps and rivets
- Inside pocket
- Snap at wrist



7051

M-3XL

- Leather bib
- Anodized snaps
- Adjustable cotton strap
- Coordinates with M-XL cape sleeves



7052

14", 20"

- Bib
- Adjustable cotton strap
- Coordinates with cape sleeve



7070

18", 23"

- Sleeves
- 2" wide elastic
- Ideal for light welding activity



7071

18", 23"

- Sleeves
- ¾" wide elastic
- Ideal for light welding activity



7072

18"

- Sleeves
- Wrist snap
- Ideal for light welding activity



7080

36", 42"

- Bib apron
- Adjustable cotton strap

APRONS/SLEEVES

automotive
food processing
food services
manufacturing

APRONS	STYLE	POCKETS	SIZE
Carpenter Waist Apron, 144/Case			
Carpenter Waist Apron	A2412D3	3	12" x 24"
Denim Apron with Grommets, 72/Case			
No Pocket	A2836D1	0	28" x 36"
Hip Pocket	A2836D2	1	28" x 36"
Two Hip Pocket	A2836D22	2	28" x 36"
Chest Pocket	A2836D3	1	28" x 36"
Chest Pocket, Split Let	A2836DBTSL	1	28" x 36"
Hip and Chest Pockets	A2836D4	2	28" x 36"
Hip and Chest Pockets	A2842D4	2	28" x 42"
Two Hip and One Chest Pocket	A2832D5	2	28" x 36"
Denim Apron with Attached Ties, 72/Case			
No Pocket	A2836D1BT	0	28" x 36"
Chest Pocket	A2836D3BT	1	28" x 36"
Hip and Chest Pockets	A2836D4BT	2	28" x 36"
Hip and Chest Pockets	A2842D4BT	2	28" x 42"
Hip and Chest Pockets, Denim Neck Strap	A2836DD4DNS	2	28" x 36"
Two Hip, Swing Chest Pockets	A2836D62BT	3	28" x 36"

STYLE	THICKNESS	SIZE	COLOR
Vinyl-Sewn w/ Grommets, 6/Case			
UPC-36	8 mil	35" x 36"	Clear
UPC-45	8 mil	35" x 45"	Clear
UPC-48	8 mil	35" x 48"	Clear
UPW-36	8 mil	35" x 36"	White
UPW-45	8 mil	35" x 45"	White
UPW-48	8 mil	35" x 48"	White
Heavyweight-Vinyl w/ Grommets, 3/Case			
UW-20-45	20 mil	35" x 45"	White
UW-20-50	20 mil	35" x 50"	White
UG-20-45	20 mil	35" x 45"	Green
UG-20-50	20 mil	35" x 50"	Green
Apron w/ Stomach Patch, Heavyweight Vinyl w/ Grommets, 3/Case			
UG-20-45SP	20 mil	35" x 45"	Green
UG-20-50SP	20 mil	35" x 50"	Green

STYLE	THICKNESS	SIZE
Vinyl-Die Cut, Blue, 72/Case		
UE4B-45	4 mil	35" x 45"
UE6B-45	6 mil	35" x 45"
UE6B-48	6 mil	35" x 48"
UE6B-50	6 mil	35" x 50"
UE6B-55	6 mil	35" x 55"
Vinyl-Die Cut, White, 72/Case		
UE6W-45	6 mil	35" x 45"

STYLE	THICKNESS	SIZE
Vinyl-Sewn Edge, Blue, 72/Case		
UHB-45	6 mil	35" x 45"
UHB-48	6 mil	35" x 48"
UHB-55	6 mil	35" x 55"
Vinyl-Sewn Edge, White, 72/Case		
UHW-45	6 mil	35" x 45"
Vinyl-Sewn Edge, Blue, 72/Case		
UPB-45	8 mil	35" x 45"
UPB-45	8 mil	35" x 48"
UPB-45	8 mil	35" x 50"
UPB-45	8 mil	35" x 55"

APRONS	STYLE	SIZE	COLOR
POSIWEAR UB			
POSIWEAR UB w/Ties	3722	28" x 36"	White
SBP - PE COATED			
PE Coated SBP w/Ties	U2510	28" x 36"	White
PE Coated SBP w/Ties	U25108	28" x 36"	Blue
Polyethylene			
Polyethylene w/Ties	2442PE	24" x 42"	White
Polyethylene w/Ties	2846PE	28" x 46"	White
Non-Embossed, 100/Bag	UDP-55-W	28" x 55"	White
Embossed, 100 Dispenser Box	DP-46	28" x 46"	White
Embossed, 100 Dispenser Box	DP-55	28" x 55"	White